

JANITH HOMES LTD THE ROOKERY

Statement of Purpose

**The Rookery
Walcott
Norfolk
NR12 0PF**

November 2010

Contents

Description

Aims and Objectives

Philosophy of Care

Home Owner /Manager – (Name, Experience, Home Address and
Communication Information)

Home Organisational Structure

Staff Training

Accommodation

Admission

Financial Arrangements and Fees

Fees – What is included?

Fees – What is not included?

Privacy and Dignity

Smoking and Alcohol

Fire Safety

Religion (Worship/Attendance at Religious Services)

Contact with Family and Friends

Care Plan Review

Complaints

Therapeutic Activities

Leaving or Temporarily Vacating

Monitoring and Quality

Pets

Medication

Telephone

Meals

Appendix A - Contract of Residence

This document has been written in accordance with the Health and Social

The Rookery / Statement of Purpose – November 2010 – 2 / 18

Care Act 2008. Each service user can access a copy and each prospective service user will be issued with a copy. The document will be reviewed annually unless circumstances dictate that it should be reviewed earlier.

Aims and Objectives

We aim to provide an organisation whereby quality care and professional ethics meets the total needs of the people who use our service. This will be the standard for its staff.

We will offer the people who use our service sufficient information to empower them to make choices and decisions without creating undue risk to themselves or others.

We will support the people who use our service to integrate into the local community whilst respecting their ethnic, religious, cultural beliefs and preferences enabling access to relevant activities (e.g. places of worship or social environments).

To maintain concise and accurate records for reference purposes in order to protect staff, service users and the company. It will be remembered that all aspects of the service user's life is confidential.

We endeavour to provide an environment that nurtures people who use our services to make their own unique contribution to daily life. Staff will be empathetic and non-judgemental. The most unexpected decisions in the past have produced some excellent inventive results.

By promoting equality and diversity we support freedom of preference in all aspects of life.

We aim to enable people who use our services to manage and understand their own finances as much as possible by providing support to carry out transactions for their personal requirements.

By continuing to offer people who use our services well trained staff we ensure that everyone has adequate individual attention thus attending to personal or private matters through the person centred care plan approach.

The company's ethos is to support our staff to mentor people who use our services through example during their daily activities allowing social, physical and emotional development of the individual's maturity.

We believe that we understand the balance created during the unique relationship between, support staff and the individual.

It is our belief that we provide staff with the knowledge to support behaviour that challenges the service.

JANITH HOMES LTD

Our policy to move forward and reinvest capital will ensure that home life is centred around:

Individual needs

Small autonomous cluster groups

Access to community facilities

Opportunities to work and learn both at home and in the community environment.

To continue to provide a familiar, secure environment for ageing service users with related increased care needs by the provision of specialised care and equipment

In conclusion, we endeavour to enhance the life of each and every individual by encouraging learning skills, self sufficiency, self awareness, creativity and mostly the ability for individuals to make their own decisions in life.

Philosophy of Care

We aim to provide the people who use our service with a secure, relaxed, and homely environment in which their care, well being and comfort are of prime importance.

Staff will strive to preserve and maintain the dignity, individuality and privacy of each individual within a warm and caring atmosphere, and in so doing will be sensitive to the individual's ever-changing needs. Such needs may be medical/therapeutic (for physical and mental welfare), cultural, psychological, spiritual, emotional and social, and people who use the service are encouraged to participate in the development of their Person Centred Care Plans in which the involvement of family and friends may be appropriate and is greatly valued.

CORE VALUES OF CARE		
PRIVACY	DIGNITY	RIGHTS
INDEPENDENCE	CHOICE	FULFILMENT
	INCLUSION	

All Care Staff within the Home will be appropriately qualified to deliver the highest standards of care. A continuous staff-training programme is implemented to ensure that these high standards are maintained in line with the latest developments in Care Practices as may be laid down in appropriate Legislation, Regulations and the Essential Standards of quality and safety.

Home Owner - Name, Experience, Home Address and Communication Information

Name: Martin Bastow

Experience: Grew up in the Rookery and has managed the home and holiday centre for 17 years.

Qualifications: Bachelor or Arts

JANITH HOMES LTD

Address of Home Owner:

The Rookery
Walcott
Norwich
Norfolk
NR12 0PF

Telephone Number: 01692 650707
Fax Number: 01692 650330
Email: admin@janithhomes.org

Home Manager – Name, Experience, Address and Communication Information

NAME: Delyth Spring
The Rookery
Walcott
Norwich
Norfolk
NR12 0PF

Telephone Number: 01692 650707
Fax Number: 01692 650330
Email: admin@janithhomes.org

Experience: Fifteen years experience working within care for adults with learning difficulties five of which were senior management deputy manager and then registered manager. Four and a half years working within the educational health and social care sector which has given me a diverse insight into all aspects of residential, domiciliary and some hospital settings as an assessor and trainer.

Qualifications: Registered Managers Award, NVQ 4 Care Award, City and Guilds Assessors Award, Adult Literacy, Delivering learning, Internal Verifier Award, Supporting Adults with Literacy Level 3, Health & Safety – Part D.

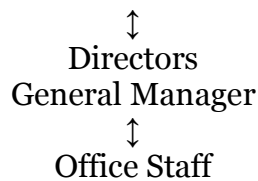
Care Speciality of the Home:

Our environment offers adults with learning disabilities and behaviour that challenges the opportunity to develop strategies that engage positively.

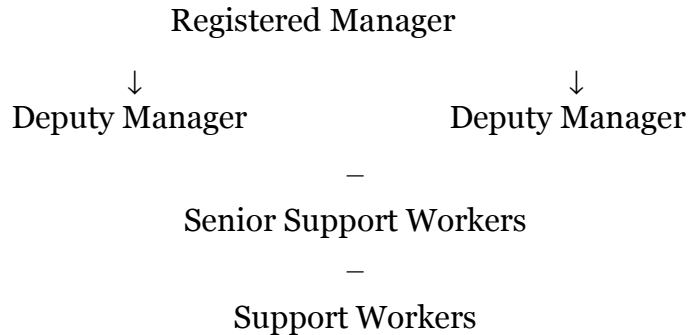
Company Organisation Structure

Owner

JANITH HOMES LTD



Home Organisational Structure



Details of Staff Numbers and Staff Training

The home employs 1 Registered Manager, 30 Support Workers, 1 chef, 4 Office Support Staff, 3 Domestic Staff and 2 maintenance staff. The homes staff are selected for their qualities of reliability, integrity, skill, friendliness and professionalism. They are carefully screened and references are always checked thoroughly. During induction all staff are trained in-house by experienced qualified senior staff in the following critical subjects:

- Care Code of Conduct
- Confidentiality
- The rights of individuals
- Health and Safety
- Food Hygiene and Safety
- Personal Care Tasks
- Responsibilities
- Safeguarding
- Infection Control

All new care staff immediately commence Common Induction Standards, if applicable and the home aims for all Carers to hold a minimum of NVQ level 2 in Care. All new members of staff are encouraged to achieve this important qualification.

We provide In-House training for BILD accredited Crisis Intervention and Safeguarding Vulnerable Adults, Food Hygiene, Communication, Patient and Manual Handling with fully trained experienced accredited trainers. The home also sends staff on external training courses for such topics as First Aid, Medication Practice, Epilepsy, Infection Control and many others. On the date this information was compiled the following was accurate.

- One member of staff with NVQ 4
- Six members of staff with NVQ 3
- Six members of staff with NVQ 2
- Four members of staff working towards NVQ 3

JANITH HOMES LTD

Five members of staff working towards NVQ 2

Accommodation

The manor house has both ground floor and first floor bedrooms and the purpose built cottages and converted farm buildings provide supported living for our more independent service users. There are 28 single accommodation and one twin room with some en-suite facilities. The accommodation meets the Health and Social Care Act 2008 and is of a high standard.

Social Rooms:

There are various day rooms in the Main House and on site Cottages, also an education room and treatment/hairdressing salon. In accordance with regulations smoking is not permitted in any communal areas. . Most of the communal areas, ground floor bedrooms in the main house and all the cottages are accessible by wheelchair users. Barrington Farm Day facilities are available on site.

ROOM SIZES

Main House

Room	Length	Width	Square Area	Bathrooms
1	3.95	3.10	12.20	En-suite
2	2.60	4.70	12.20	Shared with 2
3	4.40	4.00	17.60	Shared with 2
4	L-shaped room		19.50	Shared with 2
5	3.05	3.00	9.10	Shared with 2
6	4.25	4.50	19.10	En-suite
7	4.20	2.80	11.70	En-suite
8	3.95	3.05	12.00	Shared with 1
9	3.90	4.00	15.60	Shared with 1
10	4.40	4.90	20.00	Not shared
11A	4.50	4.70	21.10	Shared with 1
11B	3.15	3.00	9.10	Shared with 2
12	4.20	4.75	19.10	Shared with 2
13	4.30	2.90	12.40	Shared with 2

Rose Cottage 1

Room	Length	Width	Square Area	Bathroom
1	3.00	3.20	9.60	Shared by 1.5
2	3.30	3.00	9.90	Shared by 1.5
3	3.30	3.00	9.90	Shared by 1.5

Rose Cottage 1 Communal Areas

Room	Length	Width	Square Area
Lounge	5.60	5.00	28m ²
Kitchen Diner	5.00	3.06	18m ²

JANITH HOMES LTD

Rose Cottage 2

Room	Length	Width	Square Area	Bathroom
4	3.00	3.4	10.2	Shared by 1.5
5	3.00	3.30	9.90	Shared by 1.5
6	3.00	3.30	9.90	Shared by 1.5

Rose Cottage 2 Communal Areas

Room	Length	Width	Square Area
Lounge	5.60	5.00	28m ²
Kitchen/Diner	5.00	3.06	18 m ²

Maple Cottage

Room	Length	Width	Square Area	Bathroom
1	2.94	4.05	11.90m ²	En-suite
2	3.05	4.32	12.14m ²	En-suite
3	2.96	3.99	11.81m ²	En-suite

Maple Cottage Communal Areas

Room	Length	Width	Square Area
Lounge/Dining Room	6.44	4.50	28.98m ²

Lavender Cottage

Room	Length	Width	Square Area	Bathroom
4	2.91	4.18	12.16	En-suite
5	2.79	4.10	11.66	En-suite
6	2.95	4.50	13.27	En-suite

Lavender Cottage Communal Areas

Room	Length	Width	Square Area
Lounge/Dining Room	4.79	7.00	33.53

Prior to Admission

The Duty Manager in charge will be informed of the pending admission by the Registered Manager.

The service user's case notes/history data will be forwarded either prior to or on their admission except in an emergency, when they will be made available as soon as possible.

JANITH HOMES LTD

The prospective individual will be given a Service User guide, available in different formats if requested.

A pre-admission assessment will be carried out. Any section under the Mental Health Act 1984 will be recorded.

The prospective individual will be invited for an overnight stay. The individual will, if appropriate, be offered a trial period.

An admission shall be defined as any stay at Janith Homes that is overnight or longer.

Admission

Individuals interested in coming to The Rookery residential home are encouraged to visit the home and sample the atmosphere and level of service. An individual plan for admission is agreed. Often day-care is arranged on a regular weekly basis while waiting for a vacancy. This gives the person time to get to know the staff and adjust to new people and surroundings. Three month's trial period is always given before taking permanent residency.

The individual and relative(s) will be welcomed and introduced to the other service users and staff.

A discussion will take place between the prospective individual, their relative(s)/social worker to establish the following:

- a) Any comments re-assessment or person centred care plan.
- b) Relevant points from 'admission pro-forma' if not previously completed.
- c) Current medication.
- d) Address and telephone number of next of kin is correct.

Weight will be checked and recorded.

All valuable possessions brought in by the individual will be listed in the Keyworker folder.

Details of the individual will be recorded in the individual's personal file and incident/day book.

General Practitioner to give a general examination if more than six months since last examination, and, if any problem, record this in the appropriate individual service user file and incident book.

An entry will be made in Admission/discharge register and a personal details record compiled.

Ensure that the person using the service is made aware of where the following are:-

- a) His/her bed
- b) Wardrobe
- c) Toilets

JANITH HOMES LTD

- d) Any other facilities, including recreational areas
- e) Dining room, etc.

An informal discussion will take place with the individual in order to obtain further information and to help put him/her at ease.

Distribution of appropriate information regarding the admission will be forwarded to the office who will, in turn, inform others.

Financial Arrangements and Fees

We are committed to providing value for money within our comprehensive and caring service:

The fees charged are dependent on:

- The type of facility required, and
- The individual assessed needs of the individual
- Management of behavioural difficulties
- Staffing requirements
- Level of access contracted for day provision
- A banding scheme is in operation to enable broader changes in individuals care needs to be accommodated.

Depending on the personal financial situation, a service user can either pay the fees privately or these may be paid by a placing authority. In this instance social security benefits would normally form part of the fee payment with the exception of personal allowances.

Fees - What is included

- Fully trained staff in 24 hour attendance
- Good Home Cooking
- Provision for Special Diets
- Laundry Service
- Call System
- Full Central Heating
- Personal care
- Managing challenging behaviour
- Full board accommodation
- Access and support to Education room/library with touch screen computer
- Person centred care programme
- Person centred risk assessments
- Access to health and fitness advice with qualified instructor
- Access with staffing to primary NHS health care, i.e. doctor, optician, chiropodist
- Access with staffing to NHS Psychiatrist if appropriate.
- Access to communication coordinator
- Speech and language skills, according to ability.
- Access to extensive grounds incorporating small working farm
- Live music and entertainment on site

Fees – What is not included

Dry cleaning
Hairdresser
Private phone installation and calls
All personal items, i.e. personal T V licence and T V rental, satellite, video, DVD or music systems
Transport for requested outings*
Staffing for requested outings*
Personal clothing, dry cleaning services, toiletries, leisure items, i.e. books, cassettes, magazines etc.
Unless contracted, day service provision

*These additional charges will be shared with number of people taking part in outings

Privacy and Dignity

Staff are trained to strive to preserve and maintain the dignity, individuality and privacy of all service users within a warm and caring atmosphere, and in so doing will be sensitive to the individuals ever changing needs.

Smoking and Alcohol

Smoking and consumption of alcohol is permitted subject to medical advice and smoking policy.

Fire Safety

The home has a modern Fire Alarm System fitted that is directly connected to the fire service. There are “Fire Exit Notices/symbols” and “Fire Emergency Instruction Notices” displayed at strategic points throughout the home, as advised by the local “Fire Department”.

Staff are instructed during induction training with regard to the Fire Prevention/Drills Policy this includes evacuation procedure, muster points, raising the alarm, etc. Clients are informed of the emergency procedure during admission.

A full fire drill is conducted monthly which involves evacuation of the home.

All fire systems and alarms will be tested monthly by staff, problems noted and addressed and 6-monthly by the approved contractor. Records are kept of all such testing as part of the Proprietor/Managers responsibilities.

All fire fighting equipment will be checked bi-annually by a qualified fire extinguisher maintenance engineer.

Where possible, furniture, fixtures and fittings must be made of fire-resistant or fire-retardant fabrics and materials.

Measures have been put into place to alert any hearing impaired service user of the

fire alarm.

Religion (Worship/Attendance at Religious Services)

People who use the service are supported to attend religious services outside the home as they so desire, care staff will be made available to accompany them when required.

People who use the service have the right to meet clergy of their chosen denomination at any time. If required, a private room will be made available for such meetings.

Contact with Family and Friends

Individual's family, relatives and friends are encouraged to visit the service user regularly and maintain contact by letter or telephone when visiting is not possible. In these cases, staff will offer to assist the individual to respond where help may be needed.

Visitors will be welcomed at all reasonable times, and are asked to let the staff know of their arrival and departure from the home for security and fire safety reasons.

The individual has the right to refuse to see any visitor, and this right will be respected and up-held by the staff who will, if necessary, inform the visitors of the individual's wishes.

Care Plan Review

Once developed the Person Centred Care Plans are regularly reviewed by the individual, family/representative and supporting staff to ensure that it maintains appropriateness to the individual. Adverse reaction to the Care Plan by the person who uses the service will result in an immediate review of the Care Plan by the named Keyworker, Manager, Senior Carer and/or other appropriate professionals as necessary.

Family, relatives and advocates will be encouraged to participate in the individual's care planning as far as is practicable, and are invited to annual formal reviews. People who use the service and their Relatives are always welcome to chat with a member of the Care Staff if they have any concerns.

All amendments to the care plan will require the authorisation of the Home Manager or Senior Carer; certain amendments may require the authorisation of the individual's GP. All amendments to the Care Plan are recorded in full.

Complaints

If as a service user, relative or visitor, you feel that there is cause for complaint, you should first discuss the matter with the person in charge. If the matter is in your opinion, a serious one, or if you remain dissatisfied, you can record the complaint as per the complaints procedure, which is available from the office or senior staff. A full investigation will be made into the complaint, and you will be advised of the results as soon as possible.

If after this investigation, you are still not satisfied, or if you feel that the complaint is of a

JANITH HOMES LTD

serious nature and you wish to speak to a registration officer first, then you should contact the Care Standards Commission at Cambridge. Details of the registration authority details are shown below.

At anytime you can with confidence make a complaint to Martin Bastow or Delyth Spring who will try to resolve any concerns you may have and take you through the complaints procedure. You can also make your complaint to;

Jan Fooks-Bale
Care Quality Commission Eastern,
Citygate,
Gallowgate,
Newcastle-upon-Tyne
NE1 4PA
Tel 03000 616161

Other local contacts you may find useful are;

North Norfolk Learning Difficulties Team
Blickling Hall
West Wing
Blickling
NR11 6NF
01263 835200

INSPECTION REPORTS ARE AVAILABLE ON REQUEST.

Therapeutic and Social Activities

The home policy on “Therapeutic Activities” takes into account the service users wishes, interests, skills, abilities, experiences, personalities and development. The home offers a wide range of activities designed to encourage the people who use our service to develop social, artistic, and educational and work based skills. These interests and skills are detailed in each Person Centred Care Plan.

Participation can encourage interest, enthusiasm, progress and the opportunity to enjoy all experiences of life.

Day Services can be contracted to provide:

- Animal husbandry and general farming duties (non agricultural)
- Art Centre - extensive range of textiles, sculpture, ceramics, painting and drawing
- Music
- Bingo
- Education
- Cooking
- Outdoor pursuits

Outings

All outings are arranged to accommodate individual interests, choices and requests.

Examples of outings are listed below:

- Meals out, pub visits
- Shopping trips
- Theatre, concerts and cinema
- Bowling
- Swimming
- Local tourist attractions and events i.e. car boots, fetes etc.
- Horse riding
- Fishing

Leaving or Temporarily Vacating

If a person wishes to be discharged from the Home, then 4 weeks notice must be given of this intention, or 4 weeks fees paid in lieu of notice. These conditions are waived during the 4 week trial period. If a service user temporarily moves out of the Home (e.g. to receive hospital treatment) the bed is retained for a period of eight weeks, provided the normal fee is paid. In the case of social work funded service users, this retention period would be reviewed by the Home Manager.

Monitoring and Quality Assurance

Within the Home, there are various systems which ensure that close monitoring is maintained on all of the Home's services and procedures. Attention to the smallest detail is pivotal to everything that we do.

An important part of our quality programme is to involve the people who use our services, their relatives and other professionals. We regularly ask for comments on the Home, the staff and services we provide. We hold regular service user meetings and catering meetings to discuss any topic that individuals may wish to raise and an annual quality assurance questionnaire is issued to the people who use our service, families, advocates and staff that allows the home to review and analyse the requirements of all those living here.

Pets

Individual requests for pets are considered, bearing in mind that we have an adjacent, accessible working farm with an emphasis on animals that are friendly.

Medication

The home provides a comprehensive approved system to enable service user's personal medication as prescribed by the GP to be ordered, dispensed and administered by competent staff. Self medicating will be accommodated with provision for safe storage, advice and help.

Telephone

JANITH HOMES LTD

The home has a telephone, which can be used by the people who use our service for incoming calls in privacy.

Meals

Menus will be varied and favourite dishes and special diets can be catered for. Individuals are encouraged to eat in the dining room from the main house but may eat in their own room if this is their choice or use the outdoor facilities during warm weather. Those in more independent units eat their meals within these cottages.

Tea, coffee and other hot drinks are served and available 24 hours a day, visitors are also catered for.

APPENDIX A

Contract of Residence

THIS AGREEMENT Is between Janith Homes Ltd

And **“THE SERVICE USER”**:

Our Aim is to provide a long term care home for adults with learning difficulties within a safe stimulating environment with 24 hour care, three meals daily and access to snacks and beverages.

Accommodation

- 1 Fully furnished rooms, single or double with en-suite facilities where appropriate or access to bathrooms.
- 2 Communal areas for relaxation and recreation. Extensive beautiful gardens. Access to working farm and its animals.
- 3 We do not have house rules but to provide a harmonious life for everyone we request people who use our service do not disturb or harm other people or their property.
- 4 Individual's rights including privacy are to be respected.
- 5 The home follows a procedure (which can be seen) for staff when faced with behaviour that challenges the service.
- 6 Personal belongings and furniture will be accommodated wherever possible.
- 7 For everyone's comfort and to comply with legislation there are designated smoking areas.
- 8 Visitors are welcome - prior notice appreciated to avoid disappointment during the day. For evening and night visits we would ask for notice.

General

Residence and Payment of Residential Fees

- 1 Fees range from £772 to £3,000 per week depending on individual needs. Individual fee applied as per contractual agreement.
- 2 Personal monies as deemed by Department of Social Security.
- 3 Upon payment of the weekly charge (see clause 1 below) the Proprietors undertake to

JANITH HOMES LTD

- provide accommodation, food, light, heat, laundry and all necessary personal care as would normally be required by a Service User in a Residential Care Home.
- 4 The weekly charge shall be paid two weeks in advance and two weeks in arrears by cash, cheque or bankers order which it is agreed shall cover the provision of all services referred to in clause 3 above. The weekly charge shall remain unchanged unless three months written notice is given by the Proprietors or this Agreement and is jointly amended by all parties to this agreement.
 - 5 The proprietors undertake to maintain a standard of care as required by the Health and Social Care Act 2008. If an occasion should occur where a complaint or query arises the person using our service is referred to the Home's written procedure for dealing with complaints. The Proprietors will be pleased to help in every way possible; if the complaint is not resolved the individual may wish to refer to Care Quality Commission, the registration authority whose address is on the complaints procedure.
 - 6 This agreement shall continue in force until terminated by either party giving to the other written notice four weeks before termination. Should the Service User leave the Home without giving the required notice, payment of fees in lieu of notice at the normal weekly rate will be required.
 - 7 The first three months of admission shall be regarded as a trial period for the benefit of the Service User and the Proprietors.
 - 8 The Home will be the abode of the Service User. Should a person who uses our service at any time require hospital treatment, the Proprietors will retain the accommodation for four weeks at full fee, after which time we will negotiate the current fee, unless two weeks notice of termination of contract is given by either party to the other.
 - 9 In the event of death, any fees outstanding for the Service User will be charged to the Authority responsible for their placement or to their estate. Third parties who agree to meet Service Users fees in whole or in part must sign below to this effect before the said person becomes a Service User.
 - 10 The Proprietors may give notice, as outlined in clause 6 above, requiring the Service User to leave the Home under the following circumstances.
 - a) non payment of fees
 - b) if, having consulted the individual and taken advice from the appropriate members of the primary health care team, e.g. general practitioner, community nurse or social worker, concerning the present and future care needs of the individual, the Proprietors are no longer able to met the Service Users needs
 - c) any circumstances or behaviour which the Proprietors feel may be seriously detrimental to the Home or welfare of other people who use our services.
 - 11 Fees will be reviewed from time to time as determined by the Proprietors. Any increase in the fee will be as a result of inflation, for the provision of additional care and service or as a result of statutory provisions coming into force after the date hereof.

Medical and Personal Requirements

- 1 The Service User shall from his/her own resources and/or personal allowance provide medical requisites (other than medication by prescription) hairdresser, newspapers, clothing, toilet requisites and other items of a luxury or personal nature. Transport for requested outings by Company vehicle is charged @ 53p per mile and £7 per hour staffing to be shared by occupants.
- 2 Service Users will be required, before taking up residence, to provide information to

JANITH HOMES LTD

the Proprietors on the state of their health, any treatment required and the name of their medical advisor.

- 3 The Individual or, where appropriate, his or her representative may request the Proprietors to take charge of and dispense all the Individuals prescribed medications. If a Service User elects to retain and administer his or her own medication this will be subject to a risk assessment and the provision of a locked cabinet by the home.

Personal Effects and Personal Mobility

- 1 People who use the service are free to journey out alone as per the agreed care plan and will be accompanied by staff as deemed necessary.
- 2 All electrical items brought by individuals on admission or during occupation of the Home shall be first inspected as to their safety by the Proprietors before their use.
- 3 At the discretion of the Proprietors items of furniture may be brought in by the service user subject to inspection as to condition and defects liable to render the article unsafe or unfit. Transportation insurance and eventual removal of such items shall be the Service Users responsibility or that of their Executors.

Insurance

- 1 The Home is insured at the rate of £ 1,000 per person with £150 excess for valuable effects left in the individuals’ room. The insurance cover does not extend to the individuals cash securities and monies so the home has a system of encouraging and supporting service users to use banking facilities.
- 2 All valuable assets must be declared to the Proprietors upon admission for insurance purposes. Safekeeping can be arranged by the Proprietors.

In the Event of an Emergency

The Service User is asked to supply the following information to assist the proprietors in the event of an emergency or termination of accommodation:

- a) Name, address, and telephone number of next of kin.
- b) Any social or cultural traditions that the Service User requires to be kept
- c) Any particular wishes of the Service User concerning funeral arrangements.

Status of the Home

The Rookery Residential Care Home is registered as such by the Care Quality Commission. It is not a nursing home.

SIGNED
For and behalf of Janith Homes Ltd

DATE

SIGNED
The Resident

JANITH HOMES LTD

DATE

.....